

Architect Nirav Shah designs an opulent penthouse in Mumbai in an unusual colour

LUXE LOVE

palette that gives a new meaning to luxury and jewel tones

Words/Nandini Banerjee



CORNER

The lounge area of the master bedroom is in a cosy dark shade tone that reflects understated opulence.

Get the look Check out Apartment9 for similar table. Scasa has similar leather armchair. Find similar carpet at MKM Luxe Suisse.

HOME PROFILE

THE PROPERTY A 3,000 sq ft two-level penthouse for a family of four. It consists of a formal living and dining room, two master bedrooms with walk-in closets and en-suites, a guest bedroom, a den, a puja room, kitchen and service areas.



DINING ROOM DETAIL

After placing the side consoles made in faux leather finish in black with rose gold embellishments, we were struggling to get the right mirror frame to pair it with. After months of testing various options, we found the frame at a small roadside vendor in Bandra. We reworked on the finishing, and gilded it with gold leafing.

Get the look Check out Casa Paradox for similar looking armoire. For customisation of leather dining cabinet, check out Portside Cafe. Leather dining chairs can be customised at Furniture Library. Check out Andy Home for a range of candle stand, fruit bowl and cake stand similar to these.

Majestic and spectacular are the words that come to my mind when I catch the first glimpse of this penthouse in Mumbai's Khar area. Architect Nirav Shah of Advanced Concepts and Design Studio (ACDS) has designed this home in the classic early European style. The 3,000 sq ft two-level penthouse has been done for four occupants and consists of a formal living and dining room, two master bedrooms with walk-in closets and en-suites, a guest bedroom, a den, a puja room, kitchen and service areas.

Nirav began his design practice in 2003, after completing his Bachelor in Architecture in India and Masters in Business Administration in Finance and Crisis Management at Cardiff Business School. Nirav believes in the 'Tao philosophy of holistic living and has an ever-evolving, fluid form of style. He shares, 'At ACDS, we recognise and strive to harness the energies of nature existing on subject site by weaving the design parameters around the same. For me, design is not a business but a spiritual experience that creates soul-moving spaces. I believe in engaging all the five senses: aural, visual, tactile, olfactory and aesthetic taste to experience the designs.'

The owners had only one brief to give to him – a home that's aristocratic and can rival a Fendi or Versace home. With this idea, ACDS got down to conceptualising, and the first thing to get finalised was the colour palette. To achieve the luxe effect, white, gold, teal and black were chosen as the primary shades. 'Teal was selected along with gold trimmings as the base since we strongly believe in the art of subtlety. This combination provided the opulence we wanted without being overbearing. In fact, we had undergone 50 rounds of sampling to achieve the desired shade of teal,' explains Nirav.

To make the areas flow into each other seamlessly, lots of textures were added. For example, the living and dining spaces were demarcated subtly through iconic columns and chandeliers. And the negative space were balanced beautifully with bespoke furniture. 'To achieve the design objective, we created bespoke brass cherubs wall lamps, Chesterfield leather panelling, baroque panelling in shades of teal with a hint of gold, and Corinthian columns in golden Poroto marble with gold leafing. These were paired with Statuario marble, which balances all the colours and textures used in the space,' he reminisces.

The master bedrooms on the first level differ a little from the central shade palette. The master bedroom in darker shades and gold, and therefore the Prussian blue wallpaper from Cole & Sons became the hero. Subtle balancing was done with a hint of gold and cream hues on the furniture and furnishings. The walk-in closet was crafted using handmade Chesterfield panels and custom designed wall-light fixtures. In the other bedroom, the client wanted a deep purple shade to be the focus. 'We chose a velvet-textured bed and to accentuate the bold colour, we used geometric patterned wallpaper in sky blue with a hint of gold. The decor is more bohemian, with the Statuario marble floor providing relief from the vibrant shades. For the walk-in closet, customised leather ceiling and vanity counters in green, white and gold were the perfect fit.'

Since the family has a dynamic social life, the second level was reserved for their umpteen soirées and parties. That consists of a den, alfresco areas with dedicated pantry. A custom-made elevator connects the two levels. The den has been intentionally designed as an informal space with the bar being the showstopper. The ambiance reminds you of English cigar rooms with oak wood floor in a traditional herringbone pattern, brown leather furniture and pistachio coloured walls.



LIVING ROOM

For the formal living room, the furniture was custom made. **Get the look** The accent furniture is from Casa Armani. The gold wooden blinds and sheers are from D'Decor. The teal and gold panelled walls house the brass wall shades that were crafted by ACDS in-house team.





ENTRYWAY

The main door is in panelled leather chesterfield. The bespoke bevelled glass console with accent mirror, and custom made brass cherub lights, make a bold statement. **Get the look** Get a similar mirror sideboard cabinet customised at Beyond Design.





DINING AREA

The classic column defines the huge space. The columns were made from golden Portoro marble, and the gild with gold leafing.

Get the look Furniture Library can customise similar dining table and chairs, find similar armoires at Casa Paradox by Raseel Gujral and lights at Jainsons and similar carpets at Meeras.

← DEN

'We designed the room as an antithesis to the other formal spaces of the house. While we wanted to retain the understated opulent feel, we decided to treat it as a luxurious sun room/cigar room. We used a combination of pastel shades and dark oak wood.'

Get the look The furniture was sourced from mix of brands such as brands such as Casa Armani and Bentley Home available at Seetu Kohli Home.



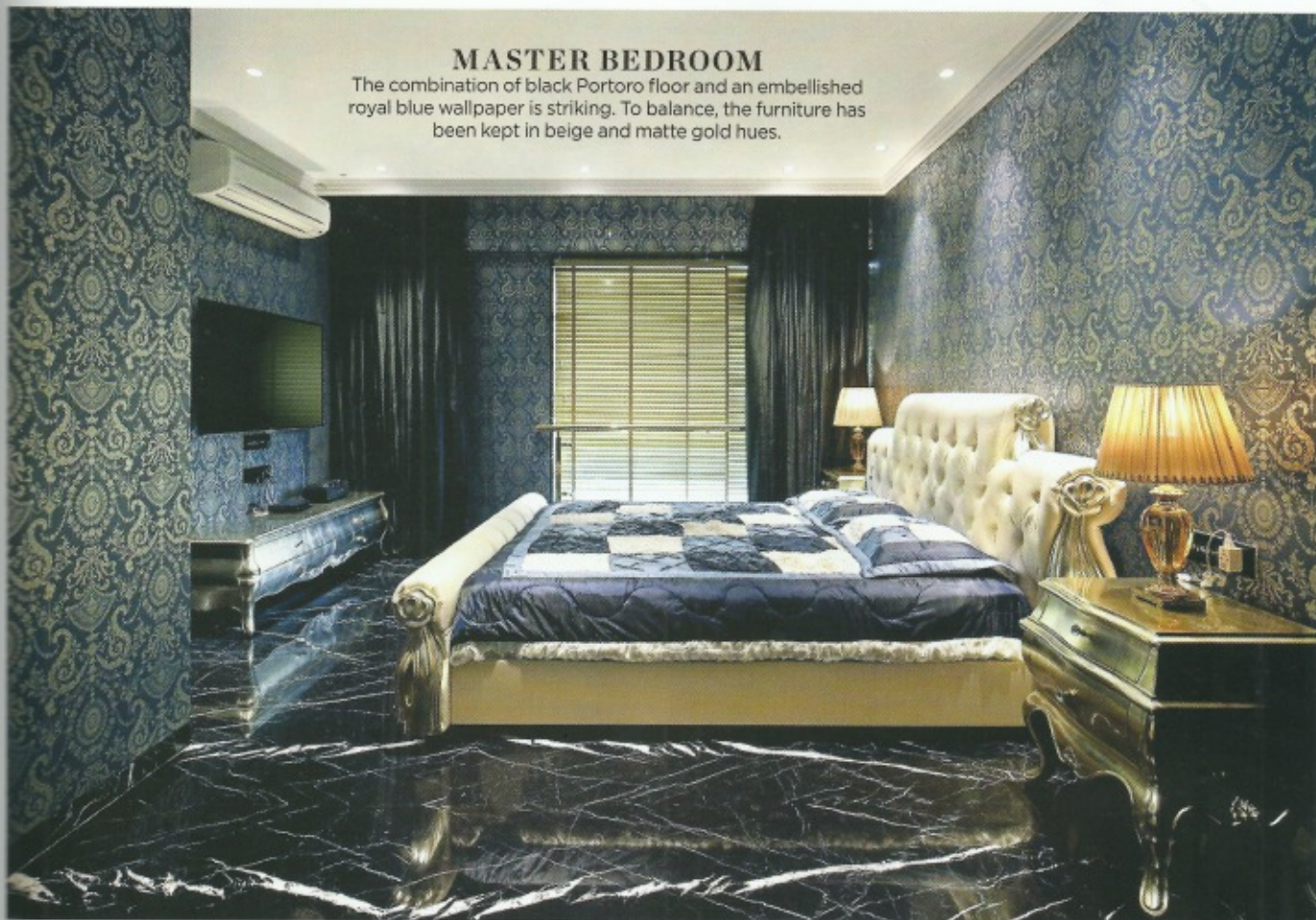
POWDER ROOM

The counter and frames were designed to match the tonal palette of the living room and was paired it with a brass chandelier in Indian accents.

Get the look The geometric patterned wallpaper is from Cole & Sons. Find similar candle stick holders at Andy Home.

MASTER BEDROOM

The combination of black Portoro floor and an embellished royal blue wallpaper is striking. To balance, the furniture has been kept in beige and matte gold hues.



SECOND BEDROOM

This room belongs to a young dynamic personality, so we opted to reflect that with a custom made purple velvet textured bed, with select brass accents and unique side tables in the same texture. **Get the look** The lamps are from Oma Living. Have the furniture customised at Furniture Library.





EN-SUITE & WALK-IN CLOSET

The palette from the second bedroom flows into the bathroom. 'To break the monotony, we designed a panelled wash basin counter and ceiling in hand stitched leather. The wardrobes were provided with a panelled feel and walls were adorned with geometric patterned wallpaper.

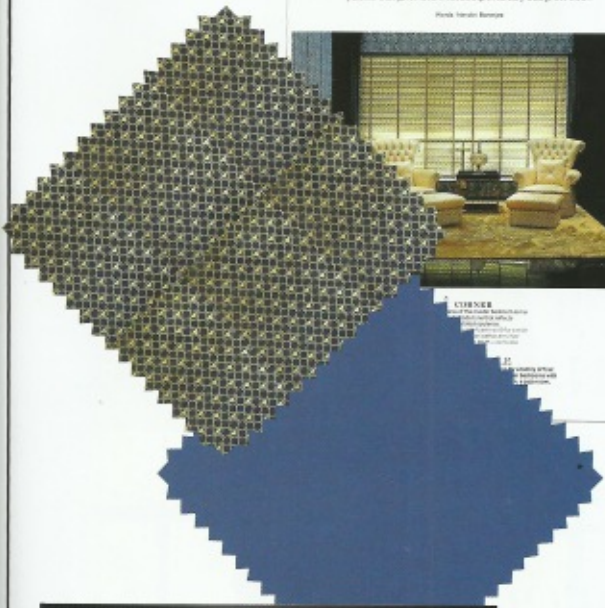
Get the look The leather is from Baron Leather.

IDEAS TO STEAL

Glamorous decor elements and a rich colour palette create this uber-glam home



CLOCKWISE FROM RIGHT **Wooden flooring**, price on request, HKS Flooring; **wall paint**, ₹990 per litre, Asian Paints; **wallpaper**, price on request, Cole and Son.



CLOCKWISE FROM ABOVE **Mirror**, price on request, Lalique; **vase**, ₹4,692, Address Home; **lamp**, price on request, Apartment9; **washbasin**, price on request, Damask; **rug**, price on request, Obeete; **sofa**, price on request, Bentley Home.

